

# More Common Sponges from Bocas del Toro, Panama

By Scott Nichols, Cristina Diaz, and Rachel Collin (2003)



***Aiolochroia crassa***

Color variable, bright yellow, brown, purple



***Clathria curacaoensis***

Encrusting to ramose, common



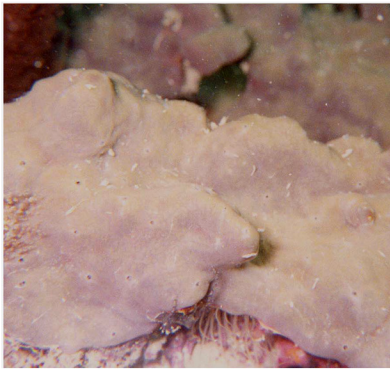
***Siphonodictyon coralliphagum***

Bores in coral skeletons



***Mycale laxissima***

Orange morph. Rare on reefs



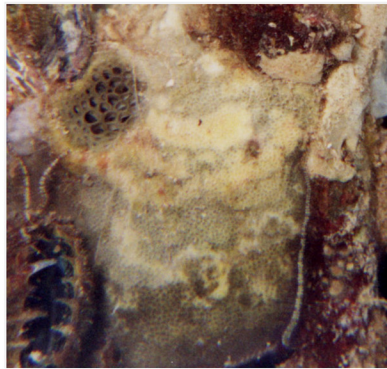
***Chondrilla caribensis***

Very common in many habitats



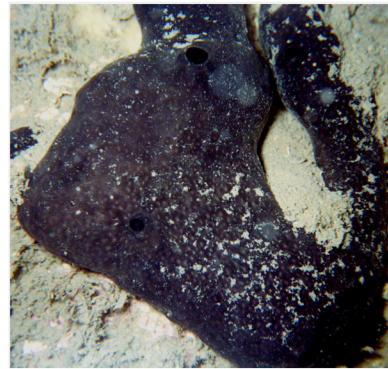
***Aplysina lacunosa***

Tubes, corrugated surface, rare on reefs



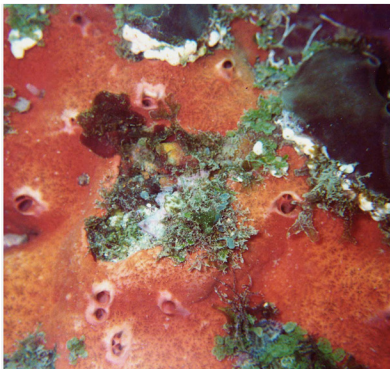
***Geodia papyracea***

Massive amorphous to subglobular



***Plakinastrella* sp.**

2-3 species, uncommon, reefs, mangroves



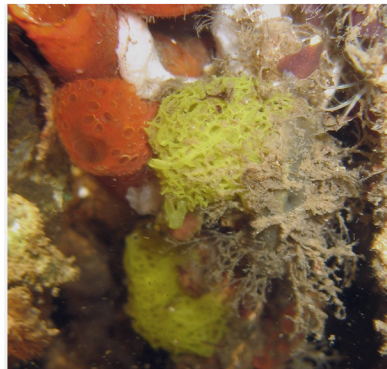
***Spirastrella* sp.**

Orange or red, thick or thin encrusting



***Spongia pertusa***

Smooth surface. Black outside, tan inside



***Clathrina coriacea***

Calcareous sponge, cryptic habitats



***Ectyoplasia ferox***

Oscules with transparent membrane



***Haliclona twincayensis***

Delicate branching (2-3 mm thick)



***Aplysina* aff. *fistularis***

Typically brownish yellow tubes



***Placospongia intermedia***

Encrusting, very tough, ridged surface



***Scopalina ruetzleri***

Soft, conulose, orange carpet, common

Produced with support from the Smithsonian's Marine Science Network and the Smithsonian's Women's Committee